

illusion

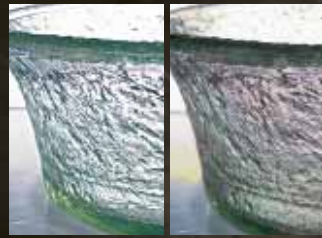
or reality



MURANO spa™

Customize your Murano Spa™ with a choice of four colored glass basins, black, white wheat or brushed nickel side panels, and ten premium Leather Tex shades. Unlimited possibilities to create a spa exclusively yours.

Standard



Crystal

Opalescence



A MASTERPIECE OF DESIGN, AUTOMATION, LUXURY



CRYSTAL CLEAN™
PIPE-FREE



Black

White

Wheat

In addition to the rich Black shown right, the Murano Spa™ base is also available in White and Wheat.

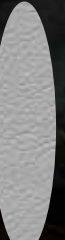
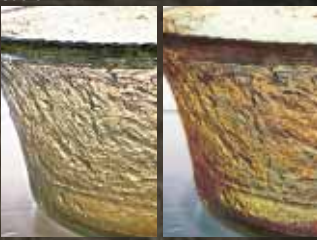
This sculpted, gel-coated fiberglass base is durable, non-porous and ensures easy care and sanitation.

Custom

Custom

Standard

Custom



Hearth

Gold

Brushed Nickel Side Panels

Cinder

Bisque

Dusk

Cordovan

Tobacco

Latte

Seaweed

Cloud

Grayson

Oceanmist

M

Murano Spa. A stunning departure in pedicure spa technology and design. From its beautifully crafted glass basin and sleek European styling to its technologically driven instrumentation and advanced cleaning standards, the Murano Spa™ surpasses every industry standard for performance and comfort. Pamper your clients in luxurious, finely detailed Leather Tex Nurture™. Feel the ultimate in water control with digital settings at your fingertips. And be assured of uncompromised cleaning standards with safe Crystal Clean Pipe-Free™ technology. The Murano Spa... Exciting. Luxurious. Making waves worldwide.

RY AND CRYSTAL CLEAN PIPE-FREE™ TECHNOLOGY.



Glass basin* raises and lowers at the touch of a button. Adjustable leg supports* ensure a tireless procedure for both you and your client. Ergonomically designed chair comforts your client, adjusts back and forward and swivels side-to-side. Special chair-tilt feature allows easy side entry and exit.



TOTAL CONTROL AT YOUR FINGER TIPS.

The Murano console is designed to take away the guesswork and guarantee a professional stress-free procedure. Every element of a healthy spa experience is directed at the push of a button. Starting with the easy-to-read digital display you are in control with Auto-Fill, Auto-Drain and Auto-Clean features. The built-in heating element ensures consistent desired temperature settings. Level and overflow sensor monitors the basin water fill and auto-adjusts to ensure a carefree pedicure from beginning to end. Never before has a pedicure spa gone beyond being a chair to becoming your trusted assistant.

REVOLUTIONARY CRYSTAL CLEAN PIPE-FREE TECHNOLOGY* replaces traditional-style jets and pipes which can harbor bacteria. The counter-flow water massage technology uses a whisper-quiet impellor, forcing water up through the foot plate providing an invigorating massage for the feet.



EUROPEAN TOUCH™
MURANO™

Toll Free 1-800-626-6912, or visit us at www.europeantouch.com, e-mail at info@europeantouch.com
Corporate Headquarters: 8301 Parkland Court, Milwaukee WI USA 53223

*Patents Pending

Adjustable cushioned headrest maintains ergonomic neck support and comfort.

Air relaxation system calms and soothes.

Oversize-chair fits all body sizes and weights up to 350 lbs.

Decorative left and right side chair panels conceal flip-up manicure trays with standardized manicure bowl.

Remote control allows client to adjust chair tilt position and make back and forward seat adjustments.

Remote control allows client to adjust the flow and rhythm of unique air relaxation system.

Water level and overflow sensor monitors basic fill and adjusts accordingly.

Adjustable leg supports* can be positioned up and down for custom fit and enhanced client comfort.

Digital central control panel is easy to reach... easy to read and easy to use, and includes a polished chrome pullout hand sprayer.

Glass basin* Borosilicate glass. Impact resistant, thermal shock resistant, scratch resistant, chemical and stain resistant.

Nonporous gel-coated fiberglass base and smooth-surfaced glass basin ensure the highest degree of sanitation standards.



CRYSTAL CLEAN™
PIPE-FREE